

YONSEI UNIVERSITY
**RESIDENTIAL
COLLEGE**



01 What is RC?

A leading educational model

The residential college (RC) combines traditional academic learning with a wide range of activities to help students develop their capabilities. By introducing the RC program, Yonsei provides a new model for internationalized higher education in Korea.

Residential space

RC provides students with an opportunity to live and learn together in an integrated academic and residential environment.

Cultural community

RC offers an array of art, athletic events and social service programs that nourish the creative and emotional aspect of students.

Clubs and student-led organizations

Living on campus encourages students to participate in various clubs and student-led organizations. Activities expand interactions among students, and enhance cohesiveness and intimacy.

Developing global leadership

The residential environment brings together students with different backgrounds and diverse cultures. Students will have the opportunity to interact and cooperate with, and actively shape, their community. This makes leadership development a natural part of the RC life.

A new educational paradigm

RC is a central component of the world's top universities such as Harvard, Yale, Princeton and Oxford.

A leading educational model

Residential College, RC



YONSEI
UNIVERSITY

A new educational paradigm
YONSEI Residential College, RC

02 Why RC program?

Yonsei is Korea's top private higher education institute, recruiting the nation's best students and faculty. It is also one of the most endowed Korean university. Now, by launching the first full-fledged RC program in Korea, Yonsei is preparing the groundwork to becoming one of the world's leading universities.

Mission statement

The RC program at the Incheon Yonsei International Campus is a leading educational model that encompasses global education, holistic education and creative education through the integration of living and learning. Yonsei's RC mission is to cultivate global leaders by developing each student's 5Cs - Communication, Creativity, Convergence, Cultural Diversity and Christian Leadership.

A leading educational model (Ivy League model) | developing the 5Cs

Global education

- | Global leadership
- | Understanding cultural diversity
- | Enhancing foreign language proficiency
- | Building communication skills

Holistic education

- | Arts, social and cultural activities, sports, social service
- | Community activities
- | Cultivating knowledge, virtue and spirituality
- | Building up the Yonsei spirit

Creative education

- | Creative convergence
- | Combining formal and informal education
- | Field experience projects
- | Creative learning community

Residential College (RC) for First-Year Students Integration of Living & Learning



Why RC is specifically targeted on first-year students?

Significant transition in life for students / First year is crucial in establishing a successful college life.

49%

First year students living away from home

1.78 hrs

First year students' average commuting time to school

9.11 vs 9.59

Study hours per week

Time spent on internet per week



First year students account for 50% of all Yonsei students placed on academic probation

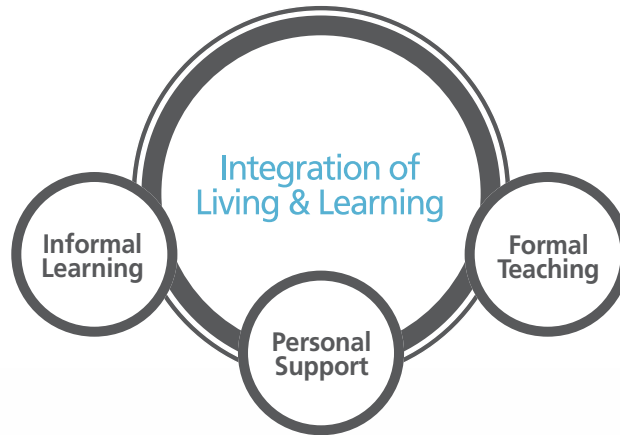
| Entering college is a significant step towards adulthood. The first year of college is critical for making the four year college experience a satisfying and successful one. During this period, students begin in earnest to plan for their future.

| RC helps first-year students adjust to college life and develop their four-year academic plan. RC provides a holistic learning environment that encourages students to interact with each other and benefit from the cohesiveness and intimacy of a small community.

| Taking a holistic approach, RC empowers each student to be a responsible and proactive member of society.

03 What do students learn at RC?

Elements of RC education



Features of RC education

Global education

Formal Teaching

- Global leadership development
 - | Global leadership forum
 - | Lectures by distinguished visiting scholars
- Intensive language programs
 - | Korean Language education
 - | English Certification program
 - | Other foreign language training

Informal Learning

- Experiencing cultural diversity
 - | Global citizenship training
 - | Activities with international students
- Informal learning activities with ERF
 - "Friday movie night"
 - "Saturday happy hour"
 - "Sunday brunch"

Personal Support

- College English Tutoring Service (CETS)
 - | Individual tutorial assistance
 - | Help with assignments and class preparation for English lectures
- Tutoring for basic science
 - | Math, physics, chemistry, and biology

Holistic education

- Servant leadership, Intellectual growth
- Volunteer Service (1 credit)
 - | Cooperation with local volunteer centers
 - | Cooperation with local children's centers
 - | Volunteer programs for international students

- Project activities
 - | YIC festival
 - | Orchestra concerts, Band/Hip-hop dance performances, Art exhibitions, Newsletter publication, Basketball league, Futsal league, South American performing arts

- Advising system
 - | Triple advising system: Faculty Advisor - Academic Advisor - Residential Master

- | | |
|---|--|
| <ul style="list-style-type: none"> Culture and arts (1 credit) <ul style="list-style-type: none"> Year book Creative art Choir Music Appreciation Performing Arts Online Museum Digital Media Art Photography | <ul style="list-style-type: none"> Sports (1 credit) <ul style="list-style-type: none"> Squash Basketball Futsal Fencing Sports dancing Pilates Swimming Fitness |
|---|--|

- Building community spirit
 - | Residential learning community
 - | Master talk & dinner
 - | Dialogues with advisors
 - | Open house
 - | Specialized programs for each house

Creative education

- Creative convergence
 - | Required common curriculum courses
 - | Small seminars
- Reading and discussion program
 - | RC English Reading & Discussion
 - | Great books & debate

- Combining formal and informal learning
 - | Creative expressions contest
 - | First-Year reading project

- Creative leader program
 - | Pro-bono service between faculty-student, student year groups
 - | Developing each students' expertise

- Creative learning Community
 - | Culture and arts programs
 - | Academic clubs

- Field Study Projects
 - | Partnerships with the Songdo Global University Campus and research institutes in Incheon Free Economic Zone (IFEZ)
 - | International Research Opportunity Program (IROP)

04 How does RC work?

Triple Advising System

Faculty Advisor

- | Conduct RC colloquia
- | Mentoring connections
- | Advising students on academic major

Academic Advisor

- | Conduct first year education programs
- | Conduct RC seminar
- | Advising students on academic plans

Residential Master

- | Care of students in Residential Houses
- | Advising students on residential life
- | Training and working with RAs to provide support for first-year students



| The Triple Advising System helps each incoming student adjust successfully to residential life at Yonsei International Campus.

| 'Faculty Advisor - Academic Advisor - Residential Master' system provides specialized advising resources to make the most of individual student's abilities.

| Integration of living and learning in RC fosters close relationships between students and faculty. It also provides an early warning system, identifying students who have difficulty adjusting to the college life.



RC Organization

Dean of Residential College

- | Professor
- | Overall management and administration of the RC

Residential Master, RM

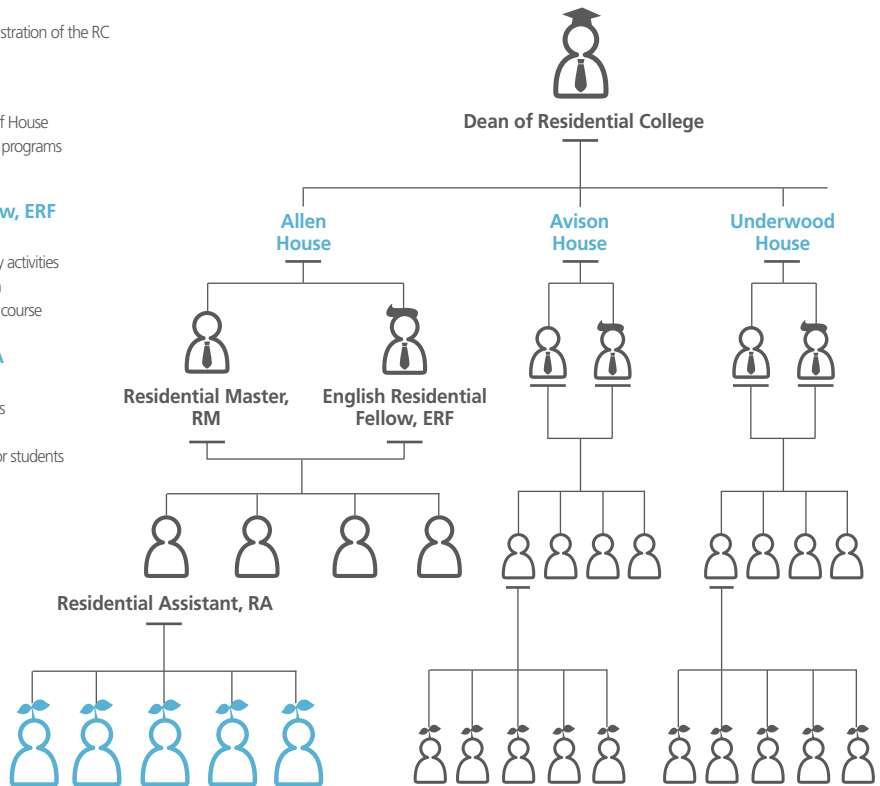
- | Professor
- | Management & administration of House
- | Planning and coordination of RC programs
- | Providing academic counseling

English Residential Fellow, ERF

- | English language instructor
- | Implementation of RC day-to-day activities
- | Helping students learning English
- | RC English Reading & Discussion course

Residential Assistant, RA

- | Graduate or upperclass student
- | Supervising and assisting students (Big brother/Big sister)
- | Acting as information resource for students
- | Supporting RC programs



05 Ten reasons to attend RC

| Gaining an all-rounded education

The RC focuses on providing an all-rounded education through student-centered and holistic education. A broad selection of activities prepares students for living responsibly in an interdependent world.

| Combining formal and informal learning activities

Round the clock education system, students will extend learning beyond the classroom through informal learning activities. This allows students to learn when and how to apply the skills and knowledge they studied in class.

| Adapting convergent thinking and critical thinking

The convergence and integration of disciplines is a notable trend in higher education and research today. Students will experience the benefits of convergent learning through small discussion groups and activities.

| Cultivating global competence

Academic exchange and hosting visiting scholars will help students cultivate global competence. RC provides programs to improve English and other language proficiencies.

| Preparing to become global citizens

Students become competent global citizens through effective global communication, together with a better understanding of the customs and etiquettes of other cultures.

| Fostering the spirit of community

RC allows students to share not only living space but also a true community spirit. Students will learn to understand other students and to exercise communal and personal responsibility through various group activities.

| Developing leadership and communication skills

Through the Global Leadership Forum, and discussions and presentations in and away from classes, students will acquire leadership and communication skills.

| Nurturing creative and artistic talent

The study and enjoyment of visual art, music and performing arts, with frequent opportunities to present their own creative works enable students to develop aesthetic sensibility and creative expression.

| Promoting civic engagement, responsibility and servant leadership

A shared living experience will provide students from diverse backgrounds to understand and embrace each other's differences. This will ultimately promote conflict resolution and the social integration.

| Encouraging a healthy lifestyle

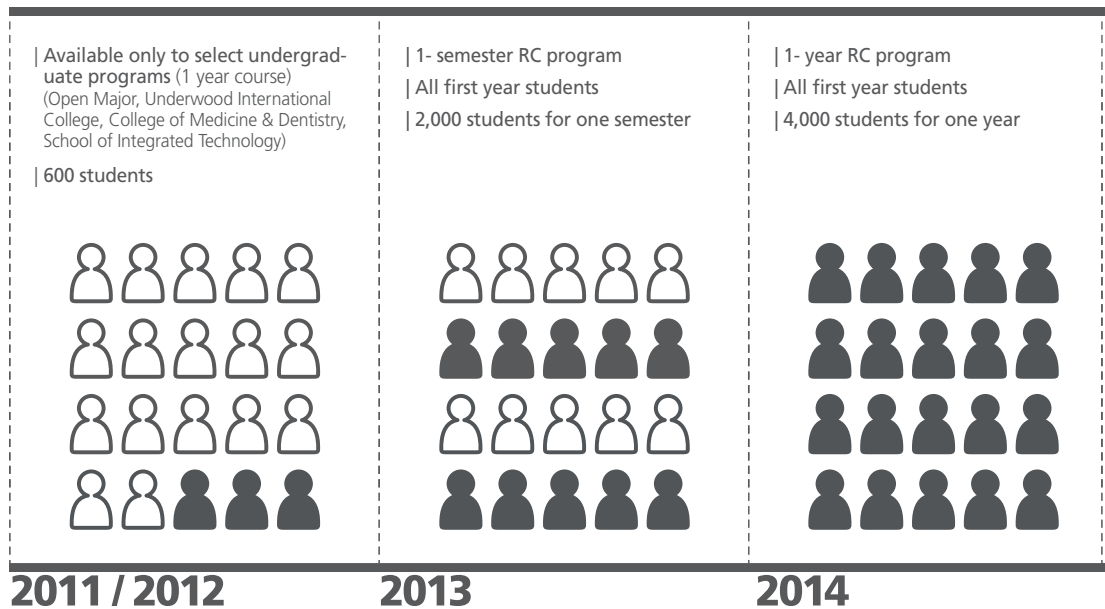
By participating in various sports activities, students are encouraged to take on challenges and gain confidence. Students will be able to build healthy bodies and healthy minds.

06 RC Program Plan



- | **Yonsei International Campus** (YIC) opened its RC program to a select-few departments and academic divisions in 2011, providing a wide range of residential program activities.
- | Yonsei is expanding the RC program to all first-year students, beginning in 2013.
- | With the successful implementation of RC, Yonsei seeks to establish a new and timely paradigm for higher education.

The RC program implementation plan (2011-2014)



07 RC program experiences



"RC education provides learning that students acquire with the heart as well as the mind."

Suh Hong Won, Dean of Residential College, Professor of English language & literature



"The RC system provides me with experiences, and memories that I won't be able to gain in Sinchon. I believe that the YIC campus is currently undervalued by Yonsei students, who never lived here. But once you stay here long enough, you never want to leave this amazing place."

Christophe Gularowski, Underwood International College, Freshman



"RC at YIC is a great place to interact with diverse people and cultures. There are many opportunities for students to improve their English while socializing with international students. Most of all, it was great that I had chances to develop skills to become a critical and creative thinker."

Kim Mool Gyeol, College of Dentistry, Freshman



"RC enriches the college experience. Residential life trained me to be independent. Also hanging out with friends from other countries made me feel much more comfortable speaking in English. In study group activities, I collaboratively worked with international students and started to dream about becoming a leader in the global arena."

Kang Minjae, College of Medicine, Freshman



"RC offers a comfortable living environment. Participating in late-night study groups and advising programs made my college life much more valuable. The program gave me a lot of confidence about my future. It was a great experience."

Park Jiwoong, School of Business, Open Major 2011

YONSEI, where we make *history*

08 YONSEI vision & mission

Since its establishment in 1885, Yonsei has stood at the heart of Korea's modernization as the first modern institute of higher education, and has sown Christian values of truth and freedom in this land. Yonsei has also striven ceaselessly for excellence in research and education.

Yonsei is now launching its 'Third Foundation' in anticipation of a rapidly changing environment that demands equally rapid change in higher education today.' Central to the 'Third Foundation' is the Yonsei International Campus (YIC) in Incheon.

As it enters this new phase of history, Yonsei is determined to restore its mission of seeking truth and cultivating intellect through a 'Back to the Basics' focus on ensuring the highest-quality education.

At YIC, Yonsei will encourage students to make contributions to the global community, to become the light and salt of our society. The residential college system will play an especially vital role and provide a new model for internationalized higher education in Korea.

